



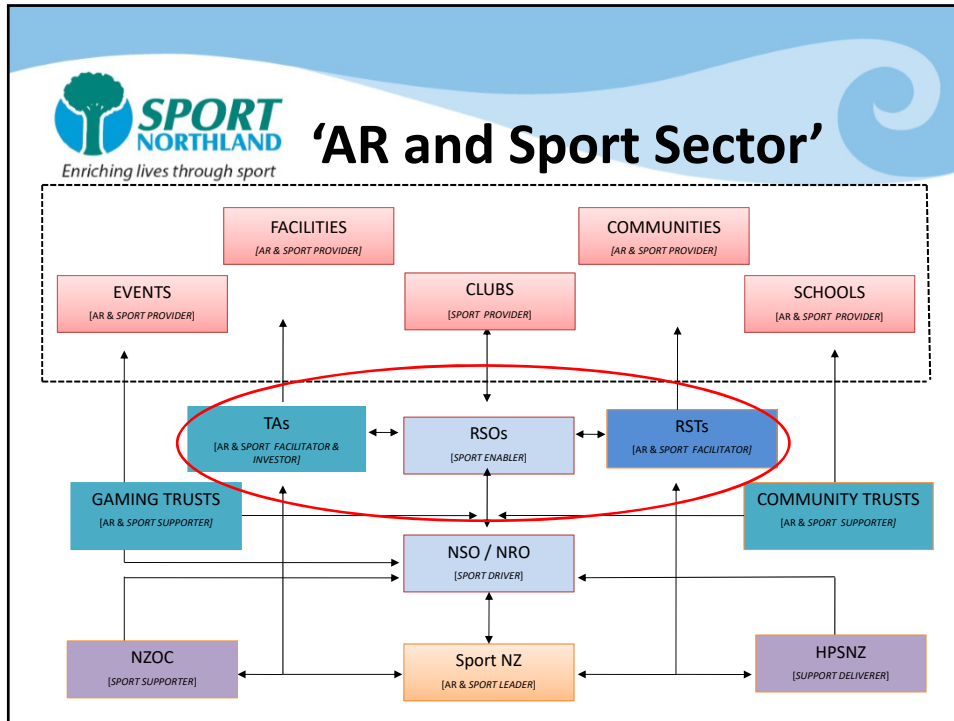
Kaipara District Council Sport Northland Partnership Update

August 2019



Background

- KDC has invested in Sport Northland for active recreation and sport outcomes since 1995 (24 years!)
- Sport Northland has used this investment to leverage more funding for resource provision in the Kaipara
- So much so, that KDC now only funds 12% of the total cost of Sport Northland resource provision in Kaipara



SN Strategic Plan 2017-22

- First approved by the board in June 2015
- Refreshed in 2017
- Some delivery (directly to end-user) still inevitable
- Move away from targeted sport approach of 2010-15
- However, more of a targeted community approach – community-led creating sustainable participation into the future
- Under-pinned and driven by quality data/insights



Systems

How we work: Enable

Targeted sport and recreation systems are connected and capable of delivering and sustaining participation opportunities that matter to their participants

- A world-class 'regional' sports system is supporting Northlanders to participate and perform – Northland regional sports system
- World-class 'local' sport systems are supporting Northlanders to participate and perform in targeted communities – Dargaville and Maungaturoto/Paparoa
- People and providers within these systems are more capable
- People and providers within these systems are more connected

Key to success: System-led = community-led development



Systems Initiative

- Improving connectivity and capability of the local system
- Collaborative approach to planning, service development, delivery and investment

So what does this look like?


- Working with those directly connected to the active recreation and sport system to apply fresh thinking around how PA can be offered
- Working with those not connected to the system to help understand what matters to them and identifying the role PA can play, providing necessary support so that the system becomes more connected and capable to work with and across the community
- Keeping the participant (and non-participant) at the centre






Targeted Kaipara Communities

- Dargaville and Paparoa/Maungaturoto
- Initial surveying attracted 100 respondents in each community
- This info has led to theming around the active recreation and sport needs and several community-led projects are currently underway or have been completed to address these, including:
 - Dargaville Pump Track
 - ‘All Playing Together’ in Dargaville
 - Te Kopuru Domain Revitalisation
 - Selwyn Park Fitness Trail
 - Paparoa Working Together
- Next steps – developing whole-of-community visions/aspirations for active recreation and sport for each community and then aligning active recreation and sport providers to deliver on the communities wants and needs



Other Active Communities Work Areas

- Coaching Developing and leading the strategic development of coaching in Northland across local & regional active recreation and sport system
- Energize Supporting primary school teachers to infuse physical activity and healthy eating into their curriculum through subject integration, coupled with making better community connections in school & local sport systems: **Working closely with 15 Kaipara schools**
- Healthy Lifestyles Working with Kaipara people involved in Green Prescription **(104)** & Active Workplaces **(KDC)** on their healthy lifestyle journeys – connecting them all into local active recreation and sport systems
- Events Management of 3 participation events in Kaipara (1 Run/Walk Series event, one triathlon and one secondary schools triathlon) attracting **850** people



Other Community Sport Work Areas

- He Oranga Poutama Working with people to increase participation and leadership as Maori at a community level through Ngaa Taonga Taakaro (Ki-o-rahi). Support Sport Northland whanau to be more responsive to Maori
- Secondary Working with providers to ensure students access quality active recreation and sport opportunities and supporting Sport Coordinators to enhance and increase student participation: **3 Kaipara secondary schools**
- Sports Talent Working with identified talented athletes to prepare them for high performance sport system
- WaterSafe Working with primary / intermediate schools on their water safety and aquatic education: **12 Kaipara schools and 1,600 students**
- Sports Awards 2019 Kaipara Sports Awards: to be held in Maungaturoto on 2 November

Working with people in settings where they live, learn, work and play



Spaces and Places

How we work: Lead, Enable and Deliver

The right spaces and places in the right locations are operating effectively and motivating more Northlanders on the pathway to participate and perform

- Supporting the prioritized projects in the Northland Sports Facilities Plan
- Sportsville Dargaville a great example of Sport Northland support/guidance
- Success in 2018 with the NRC Regional Sports Facilities Rate, which contributed the final \$600K to Sportsville Dargaville
- MAZ in the process of also receiving funding from this rate for their next stage
- KCCP another great example

Key to success: Planned approach/good practice/knowledge and expertise



Spaces and Places Initiative

Overseeing Sport Northland Owned Facilities

- SN owned and managed – ASB Stadium and Kensington Fitness, Whangarei
- SN owned and contracted out:
 - Whangarei Aquatic Centre, Whangarei
 - Bay of Islands Recreation Centre, Kawakawa
 - Kauri Coast Community Pool, Dargaville

Development of External Facilities

- Support and guidance for prioritised projects in the Northland Sports Facilities Plan:
 - Sportsville Dargaville (ongoing even though now completed)
 - Mangawhai Activity Zone (funding from NRC about to occur)
 - Te Hiku Sports Hub (final stages of securing the \$12m required to start)
 - Pohe Island (rugby and bike)
 - Sportsville Kaikohe (Lindvart Park)




Kaipara Staff

Full-Time (2.5 FTEs)

- Community Connector – Roxanne Kelly
- Primary Schools (Energizers) – x 3


Part-Time (1.0 FTE)

- Secondary Schools Sports Director
- He Oranga Poutama Kaiwhakahaere
- WaterSafe Instructors
- Healthy Lifestyle Advisors (Green Prescription)
- Active Workplace Coordinator
- Run/Walk Events Coordinators
- Spaces and Places



Kaipara Position Costs/Contribution

Cost	
• Position Costs	\$220,000
Funding	
• NDHB	\$ 70,000
• Sport NZ	\$ 50,000
• Foundation North	\$ 40,000
• KDC	\$ 26,000
• User pays	\$ 15,000
• Sponsorship/Other	<u>\$ 19,000</u>
	\$220,000



Summary

- New way of working that is sustainable over time
- ‘Targeted’ and focused on a ‘systems approach’ in communities – ‘participant at the centre’
- Community-led devt approach will take time to bed in
- Overarching focus – more people playing, administering and supporting play, active recreation and sport
- Sport Northland appreciates the support from KDC and has used this support to leverage other funds for resource provision in Kaipara (12%/88%)
- \$26,000 increased by CPI as per other Councils?

Desktop Analysis Auckland Regional Landfill



Kaipara te Oraoangai • Te Oraoani Te Rauwharua



SIZE COMPARISON



Lake Taharoa

Taharoa Domain Kai Iwi Lakes/Camping Ground

WMNZ's Landholdings in Wayby Valley are approximately 5x the size of Lake Taharoa




Kaipara te Oraoangai • Te Oraoani Te Rauwharua



THE AUCKLAND REGIONAL
LANDFILL

- What are the important issues for KDC to consider?
- Rāhui
- Environment
- Road Congestion
- Economy
- If it all goes wrong



KAIPARA DISTRICT
Kāwhiri te Oraoraora - Te ōhanga Te ōhanga

WHAT'S NEXT

- Do Elected Members want to submit on the applications for a resource consent and plan change?
- If so, are there other issues not covered in the desktop analysis that should be investigated and addressed in the submission?
- Is the Chief Executive delegated the authority to authorise further research and make a submission?



KAIPARA DISTRICT
Kāwhiri te Oraoraora - Te ōhanga Te ōhanga

RESOURCES NEEDED

- Staff Time (BAU)
- External Expertise - Consultants
- Costs not budgeted



KAIPARA DISTRICT
Kōwhiri te Whānau | The People The Future

ANY QUESTIONS?



KAIPARA DISTRICT
Kōwhiri te Whānau | The People The Future

We welcome your feedback!
0800 727 059 | www.kaipara.govt.nz

Solid Waste Activity Consultation Direction





INTRODUCTION

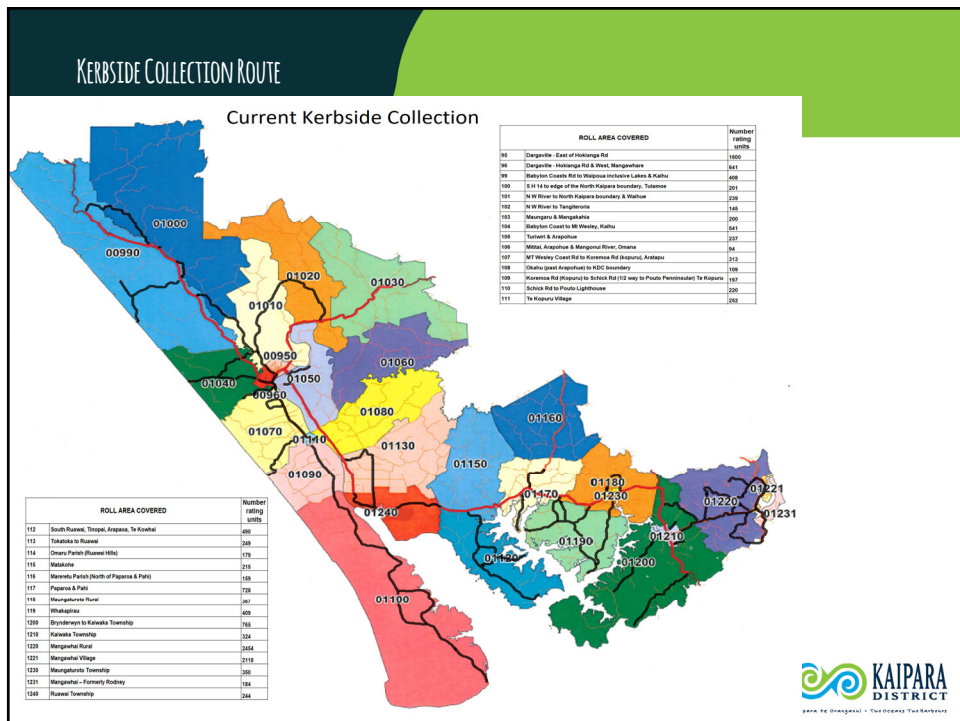
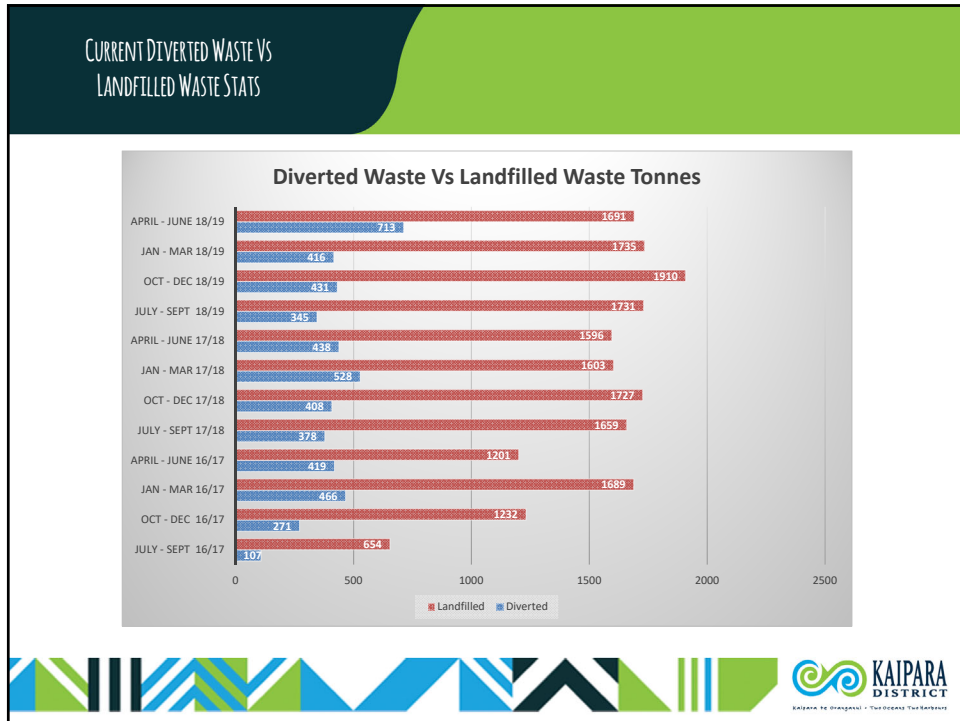
Several actions were identified as part of the 2017/2022 Waste Management and Minimisation Plan. The following actions will be covered by the planned consultation:

- Determine community interest in additional/new rural drop-off locations
- Determine community interest in new holiday home drop-off locations
- Investigate provision of a universal recycling collection
- Consult with the community about the best solution for litterbins.

These were fed into the 2017 Solid Waste Asset Management Plan and identified as improvements.

Results from the formal consultation will be utilised to plan and budget for any changes to be included in the 2021/2031 Long Term Plan. This will also coincide with the new Solid Waste Collection and Transfer Station operations contract which expires in June 2021.





OPTIONS FOR CONSIDERATION IN UPCOMING FORMAL CONSULTATION

- 1) Stay with general refuse bags and introduce crates for recycling
 - User pays for general refuse, targeted rate for recycling
- 2) Introduce a wheelie bin Option for general refuse and crates for recycling
 - User would pay for preferred option for general refuse, Targeted rate for recycling
- 3) Introduce a fully targeted rate to cover both general refuse and recycling disposal and collection.
- 4) Status quo
 - User pays for recycling and refuse disposal with some minor improvements, such as collection extensions, and users can choose to privately hire wheelie bins.
- 5) There will also be discussion around litterbin provision and holiday home rubbish and recycling solutions.



FOR CONSIDERATION DURING PLANNING PROCESS

- How to improve service to rural residents, and what this will cost
- How will a targeted rate for refuse disposal impact on local businesses (reference to business operators carrying out private refuse collection)
- Costs for provision of different options
- Different targeted rates depending on residential, commercial, services available or rural properties
- Method of payment for user-pays wheelie bin option
- Impact of targeted rates and perceived free disposal and recycling on illegal dumping
- Timeframes for rolling out, with possibility of a staged rollout, and how to inform new residents
- Frequency of collections
- Litterbin provision
- Holiday home refuse and recycling solutions
- To be consulted on as part of Annual Plan consultation in March 2020

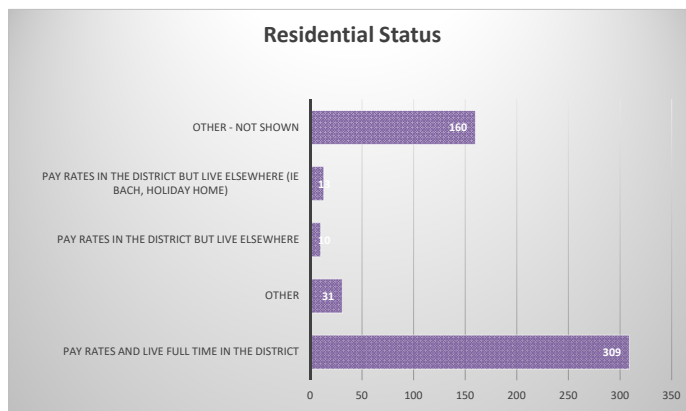


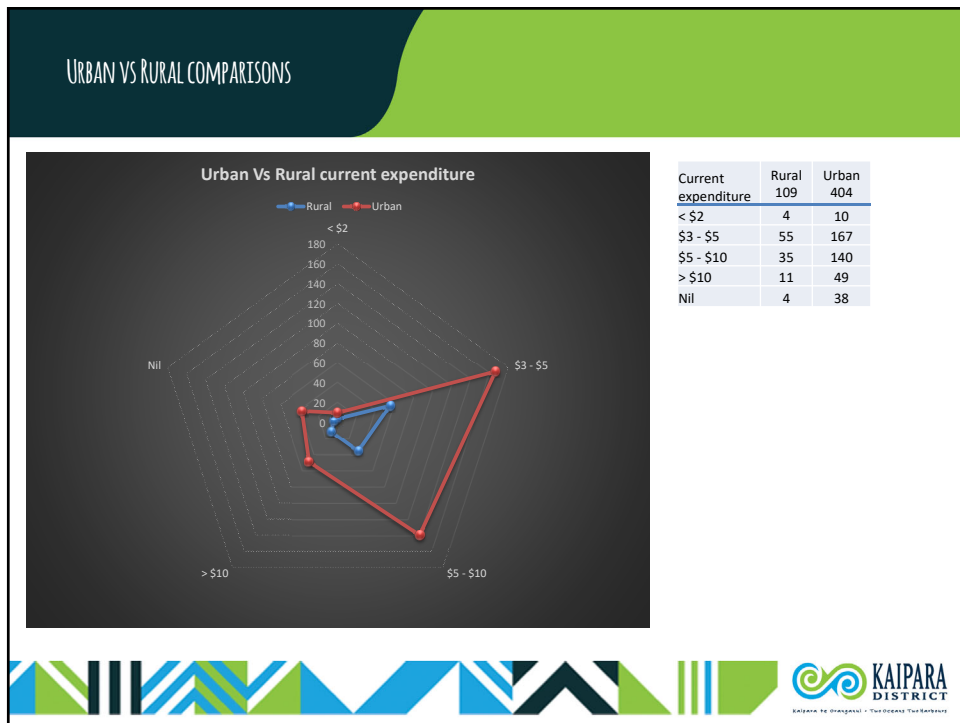
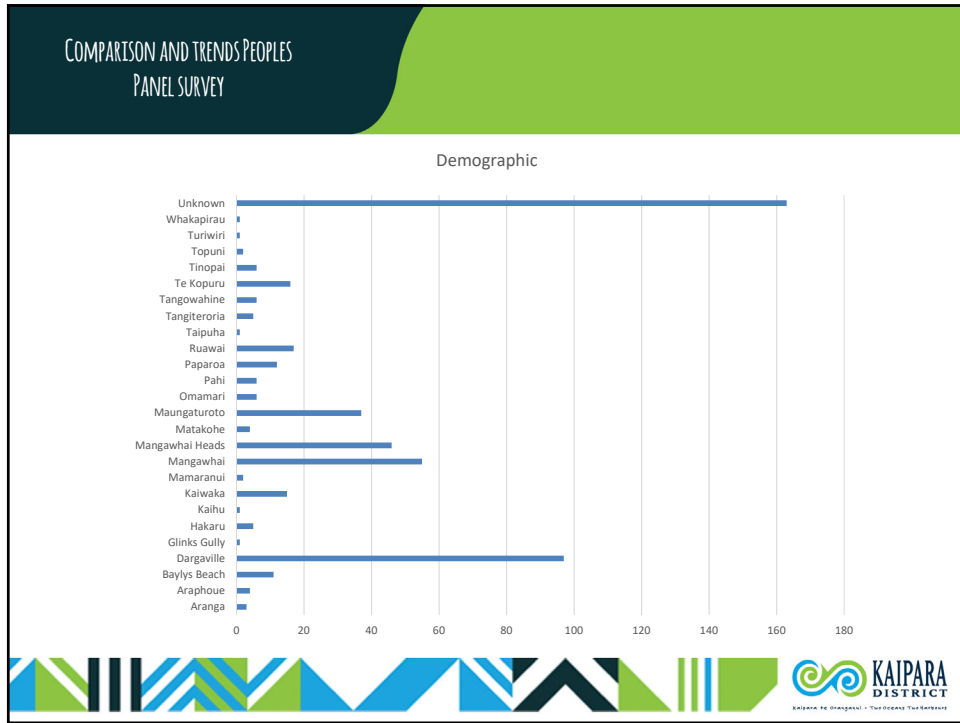
COMPARISON AND TRENDS
PEOPLE'S PANEL SURVEY

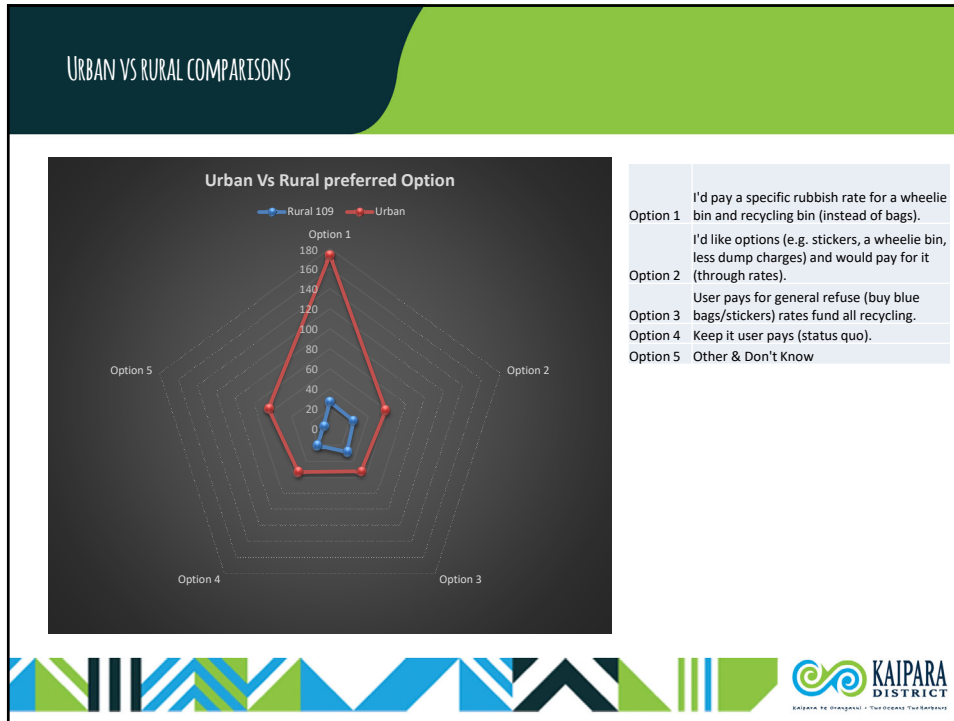
- Out of 523 total responses – 109 were rural i.e. identified as using rural collection points
- 83% of rural respondents currently spend between \$3 and \$10 per week on rubbish disposal
- 75% of rural respondents have identified that they would support a targeted rate of some sort for refuse and recycling
- 71% of all respondents have indicated that they would pay via targeted rate or sticker system
- 76% of all respondents usually spend between \$3 and \$10 per week on refuse and recycling disposal
- 15% of all respondents would like the current service level to remain.



COMPARISON AND TRENDS PEOPLES
PANEL SURVEY







COST OF CURRENT SERVICE

Taking into account income made from bag sales and Council costs, the current service is estimated to cost the following:


- \$1,687,028 – this includes District-wide litterbin servicing, Dargaville Transfer Station management, disposal and District-wide kerbside refuse and recycling collection (costs include \$327,800 funded from general rates, \$42,000 funded from grants, the remaining is income received from gate charges and bag sales). Bag sales and gate charges include profit margin if any. There is no allowance here for income that is received from recycled product sales.

NB: this does not include Haku Transfer Station operations, illegal rubbish retrieval (apart from what is collected as part of the kerbside collection), Closed Landfill Management or Recycling subsidies.

- This equates to approximately \$122 per rateable household (based on 13,838 households, including rural, urban and commercial properties)

PROVISIONAL COST ESTIMATES

- Provision of recycling crates is \$20 per household
- Provision of 240L wheelie bin is \$60 per household
- Provision of purpose-built recycling stations in rural locations is \$32K per unit, with additional costs required for collection (these are the containers currently in use in the Far North District)
- Cost per tonne to dispose to landfill is currently \$65 per tonne, plus transportation – future estimate is between \$65 - \$300 per tonne, mainly dependent on the Emissions Trading Scheme and Waste Disposal Levy
- Cost to process per tonne for recycling for markets is \$236, based on current subsidised rate
- Cost per tonne to transport to markets is \$75, based on current subsidy paid
- Collection by specialist truck is \$3 per km and \$100 per hour.



ANY QUESTIONS?



We welcome your feedback!
0800 727 059 | www.kaipara.govt.nz



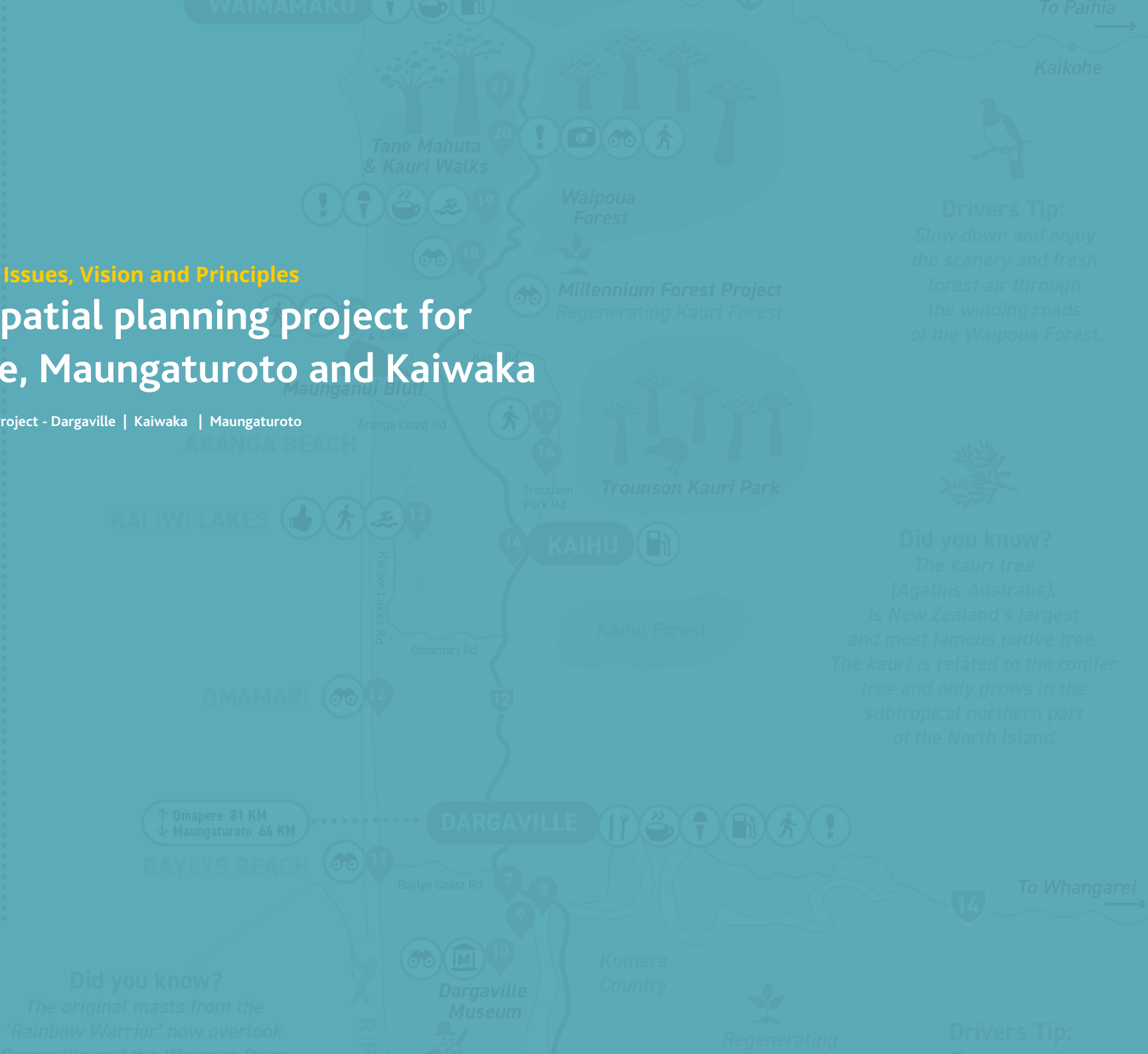
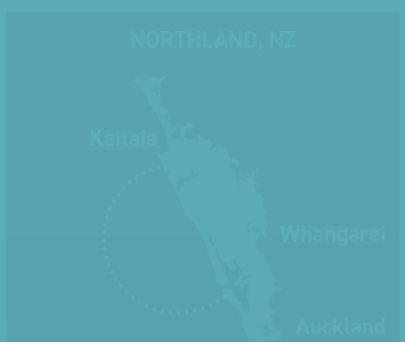
- Swimming
- Food
- Cafe
- Shop
- Petrol station
- Museum
- Scenic view
- Iconic building
- Local favourite
- Don't miss
- '7 Stands of Kauri'

July/August 2019

Engagement 1 - Issues, Vision and Principles

Kaipara spatial planning project for Dargaville, Maungaturoto and Kaiwaka

Kaipara Spatial Planning Project - Dargaville | Kaiwaka | Maungaturoto



Drivers Tip:
Slow down and enjoy the scenery and fresh forest air through the winding roads of the Waipoua Forest.



Did you know?
The kauri tree (*Agathis Australis*), is New Zealand's largest and most famous native tree. The kauri is related to the conifer tree and only grows in the subtropical northern part of the North Island.

Did you know?
The original masts from the 'Rainbow Warrior' now overlook Dargaville and the Waipoua River.

Drivers Tip:

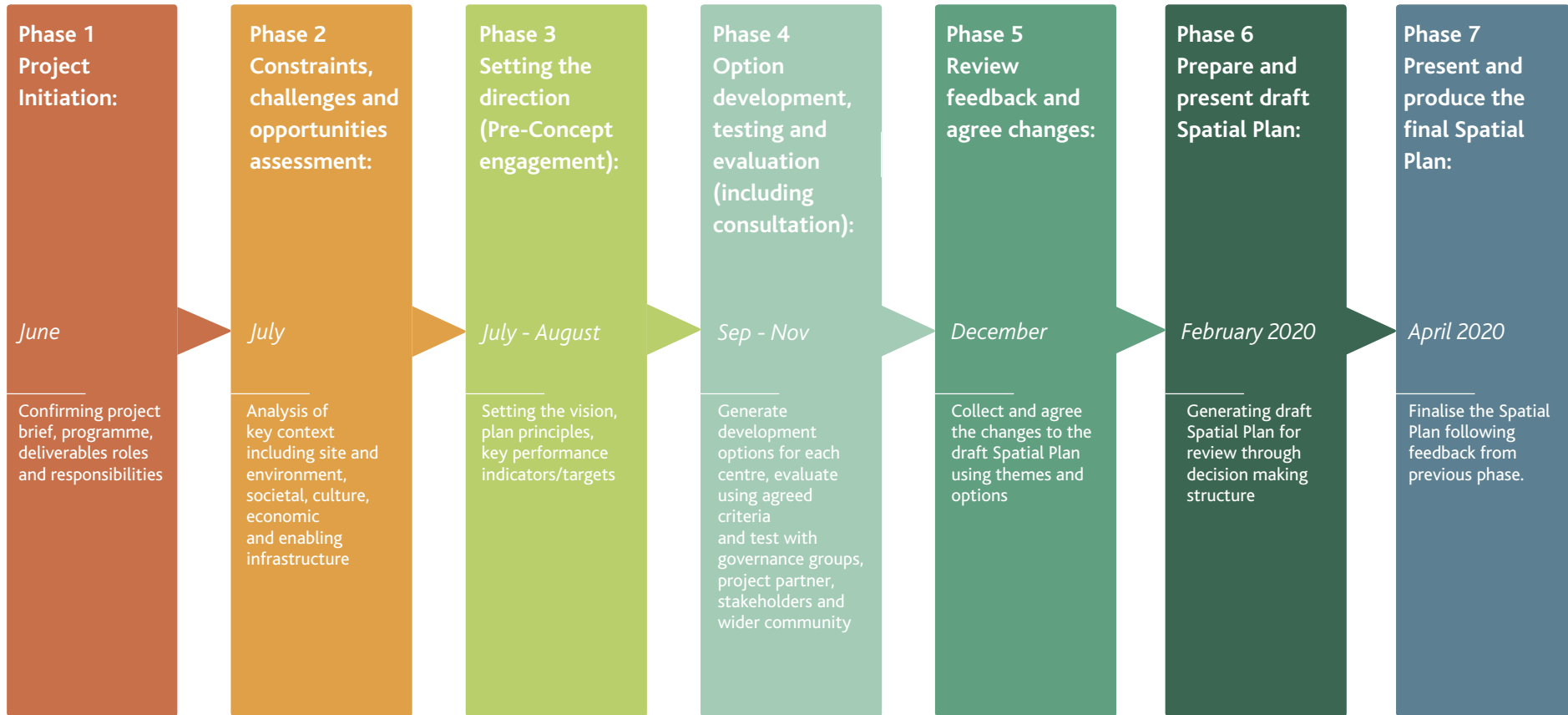
Presentation Outline

1. Introduction (5 mins)
2. Overview of Project (5 mins)
3. Overview of engagement and consultation (10 mins)
4. Dargaville (5 mins)
5. Kaiwaka (5 mins)
6. Maungaturoto (5 mins)
7. Q & A (20 mins)
8. Next Steps (5 mins)

1. Introduction - What is the problem we are attempting to fix?

- There are limited spatial guidelines outside the District Plan rules for encouraging quality residential and business development
- There is an appetite to develop in these areas but investment is constrained by:
 - Infrastructure at capacity for three waters
 - State highway policies
 - Existing land use zoning
- Realising the areas' economic potential including, local production, industry and tourism
- There are environmental, cultural and community concerns about development – where it could occur, the type of development that might occur and the change this could bring
- Subdivisions that are occurring are often on the edge of the urban area and present difficulties with integrating into a future urban form and pattern

2. Overview of Project - Timeline



July/August 2019

Engagement 1 - Issues, Vision and Principles

Kaipara Spatial Planning

Kaipara Spatial Planning Project - Dargaville | Kaiwaka | Maungaturoto

↑ Omarepe 81 KM
↓ Maungaturoto 64 KM

DARGAVILLE



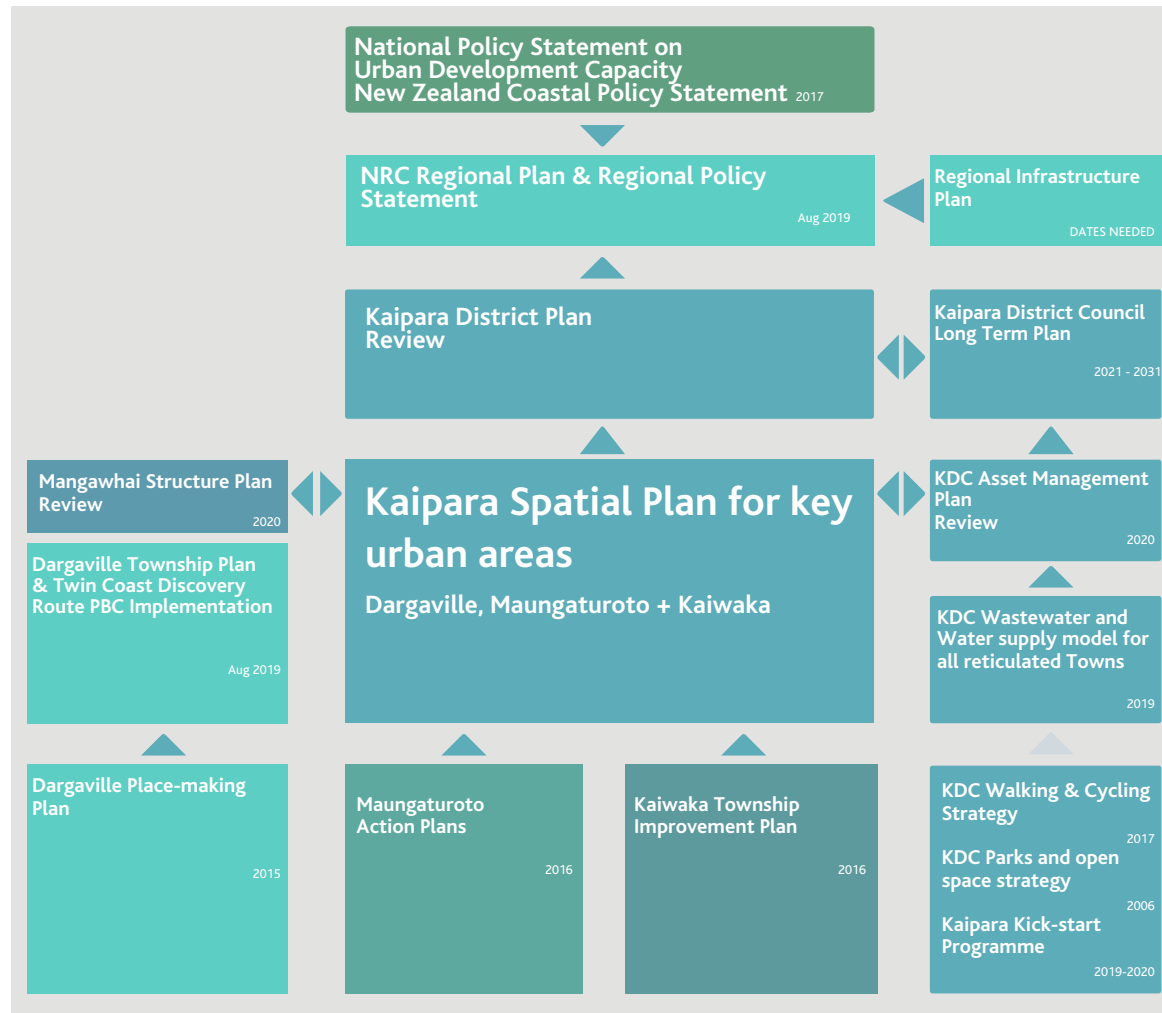
BAYLYS BEACH

Baylys Coast Rd

To Whangarei



Overview of Project - Kaipara District planning work streams



July/August 2019

Engagement 1 - Issues, Vision and Principles

Kaipara Spatial Planning

Kaipara Spatial Planning Project - Dargaville | Kaiwaka | Maungaturoto

↑ Omapere 81 KM
↓ Maungaturoto 64 KM

DARGAVILLE



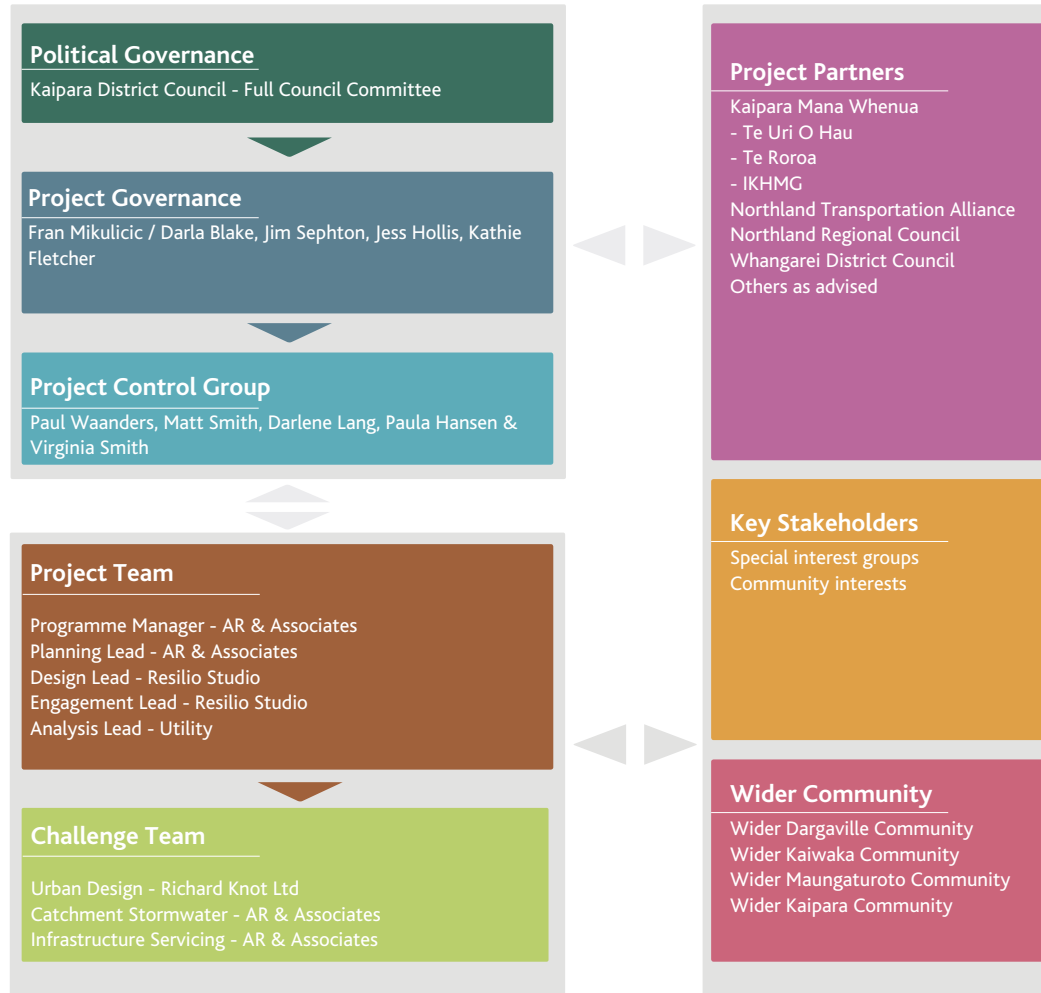
BAYLYS BEACH

Baylys Coast Rd



To Whangarei

Overview of Project - Kaipara District spatial work streams



3. Overview of engagement and consultation



July/August 2019

Engagement 1 - Issues, Vision and Principles

Kaipara Spatial Planning

Kaipara Spatial Planning Project - Dargaville | Kaiwaka | Maungaturoto

↑ Omapere 81 KM
↓ Maungaturoto 64 KM

DARGAVILLE



BAYLYS BEACH

Baylys Coast Rd

To Whangarei



Mana Whenua

- The engagement event supported and honest exchange
- The engagement has opened the door for new and ongoing relationship with Hāpu / Mana Whenua at a Marae level
- It is important to get engagement process right that supports authentic relationships and partnerships
- This is the start of something exciting and Marae representatives look forward to further engagement
- More information and understanding is needed on the District Plan, its policies, objectives and what the review holds for Mana Whenua
- Marae engagement will be an extensive process that will require greater resourcing beyond current contract with AR + Associates
- Key themes discussed
 - Developing and fostering relationships
 - Bringing our people home
 - Papakainga and warm and dry homes
 - Marae - restoration, appropriate zoning and infrastructure
 - Education
 - Industry and work place opportunities

Stakeholder sessions



July/August 2019

Engagement 1 - Issues, Vision and Principles

Kaipara Spatial Planning

Kaipara Spatial Planning Project - Dargaville | Kaiwaka | Maungaturoto

↑ Omapere 81 KM
↓ Maungaturoto 64 KM

DARGAVILLE



BAYLYS BEACH

Baylys Coast Rd



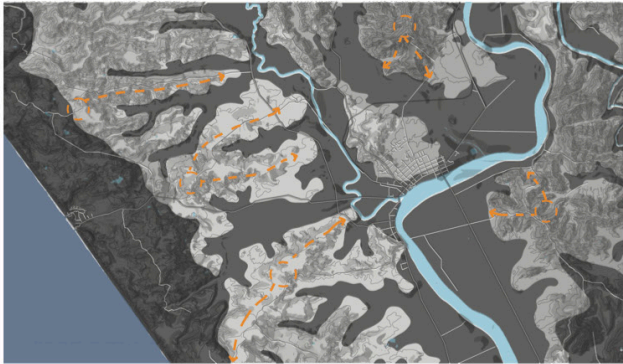
To Whangarei

Physical Constraints Challenges + Opportunities

Land form, land stability + slope

This plan provides an overview of the landform and geotechnical constraints and opportunities for development. The map considers geohazards, susceptibility to liquefaction and soil settlement. The Darkest grey indicates the least suitable land for development.

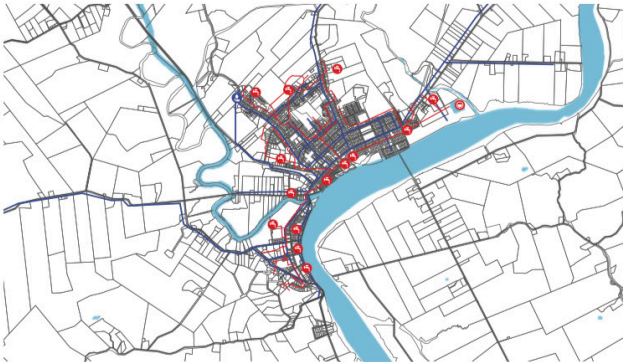
The map is based on information from the website oerev.environment.govt.nz and a Geotechnical Assessment report from ENGEO Limited.



Infrastructure + utilities

The plan below illustrates the extent of the main freshwater and wastewater networks including pump stations, treatment plants and reservoirs.

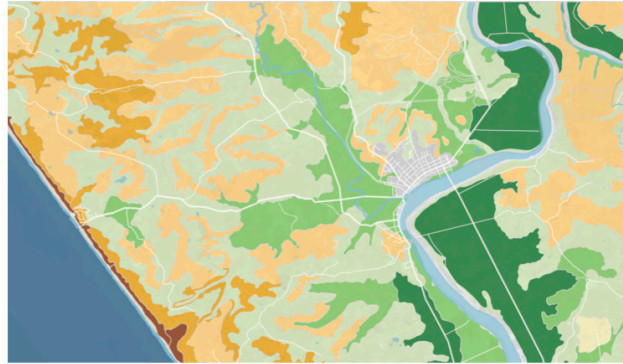
The information is based on Kaipara District Asset Management Plans.



Soils + land use capability

This plan provides an overview of the land most suitable for cultivation.

The information is based on information from Land use capability (LUC) handbook the website oerev.environment.govt.nz. LUC Land use classes from 1 to 8. 1 is the most suitable for production and 8 is the least suitable. Classes 1 - 4 are suitable for multiple productive uses including extensive cropping, grazing and forestry. Classes 5 and 6 are suitable for grazing and/or forestry. Classes 7 and 8 are not suitable for productive uses.



Circulation + access

The plan below illustrates the main infrastructure, public transport and the travelling distance at 5 minutes and 15 minutes for bicycles and pedestrians.

The Cadastral, Road and Aerial photo information is based on GIS Information from U2NZ (Land Information New Zealand) Database and Targomo. Targomo analyses travel distance for Cars, Bicycles and Pedestrians.



Water, flooding and vegetation cover

The plan below illustrates the type and extent of existing vegetation cover and areas prone to flooding in the local area. The areas of flooding include typical flooding and larger flooding events - 1 in 50 year and 1 in 100 year events.

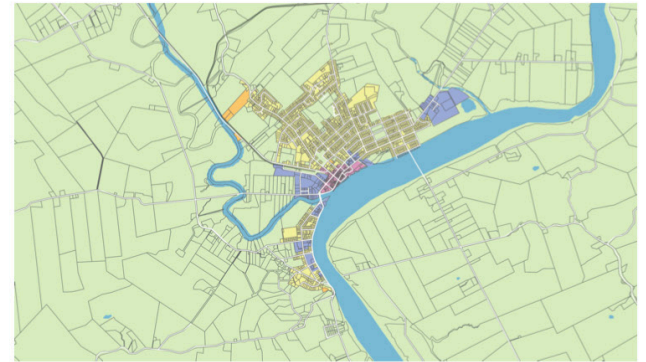
The information is based on information from the website oerev.environment.govt.nz.



Planning + landuse

This plan provides an overview Kaipara District Plan land use zones including Residential, Maori Purpose Business Commercial and Business Industrial and Rural usage.

The information is based on Kaipara District Plan.



Physical constraints challenges + opportunities

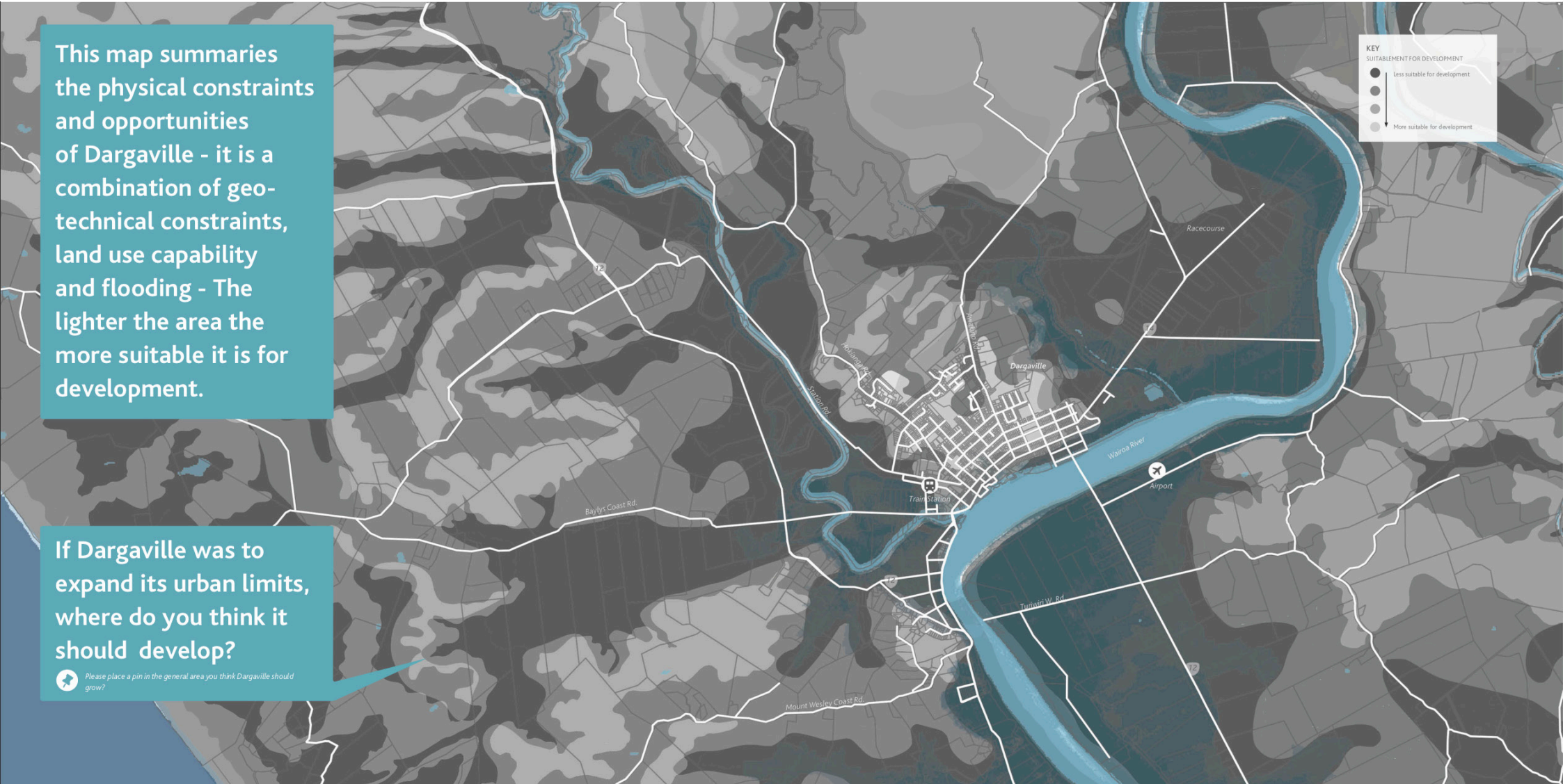
This map summaries the physical constraints and opportunities of Dargaville - it is a combination of geo-technical constraints, land use capability and flooding - The lighter the area the more suitable it is for development.

If Dargaville was to expand its urban limits, where do you think it should develop?

 Please place a pin in the general area you think Dargaville should grow?

KEY
SUITABLE FOR DEVELOPMENT

- Less suitable for development
-
-
- More suitable for development



July/August 2019

Engagement 1 - Issues, Vision and Principles

Kaipara Spatial Planning

Kaipara Spatial Planning Project - Dargaville | Kaiwaka | Maungaturoto

↑ Omapere 81 KM
↓ Maungaturoto 64 KM

DARGAVILLE



KAIPARA DISTRICT

SAYLIS BEACH

Baylys Coast Rd

To Whangarei

Community + culture

What key community activities occur here?
What organisations are active in Dargaville?

Please use the space below to write the key community activities occurring in Dargaville and the active organisations.

Is there anything missing in Dargaville?

Please write any spaces, places and/or services that you would like to see in Dargaville that you don't currently have.



July/August 2019

Engagement 1 - Issues, Vision and Principles

Kaipara Spatial Planning

Kaipara Spatial Planning Project - Dargaville | Kaiwaka | Maungaturoto

↑ Omapere 81 KM
↓ Maungaturoto 64 KM

DARGAVILLE



Baylys Coast Rd

To Whangarei

Vision, principles + aspirations



July/August 2019

Engagement 1 - Issues, Vision and Principles

Kaipara Spatial Planning

Kaipara Spatial Planning Project - Dargaville | Kaiwaka | Maungaturoto

↑ Omarepe 81 KM
↓ Maungaturoto 64 KM

DARGAVILLE



BAYLYS BEACH

Baylys Coast Rd

To Whangarei



4. Dargaville



July/August 2019

Engagement 1 - Issues, Vision and Principles

Kaipara Spatial Planning

Kaipara Spatial Planning Project - Dargaville | Kaiwaka | Maungaturoto

↑ Omarepe 81 KM
↓ Maungaturoto 64 KM

DARGAVILLE



BAYLYS BEACH

Baylys Coast Rd



To Whangarei

Dargaville - Emerging themes

Issues, challenges, insights and opportunities

1. Impacts of flooding and climate change
2. Lack of infrastructure (4 waters)
3. Lack of tertiary education
4. Lack of land and infrastructure available for industry and manufacturing

Visions and aspirations

1. Create a destination rather than a gateway
2. Food bowl of New Zealand - Kai for Kaipara
3. Connect the town centre and wider community with the Northern Wairoa River
4. Tertiary institution - more choices
5. Build on our successful industries

5. Kaiwaka



July/August 2019

Engagement 1 - Issues, Vision and Principles

Kaipara Spatial Planning

Kaipara Spatial Planning Project - Dargaville | Kaiwaka | Maungaturoto

↑ Omarepe 81 KM
↓ Maungaturoto 64 KM

DARGAVILLE



 KAIPARA DISTRICT

SAYLIS BEACH

Baylys Coast Rd

To Whangarei

Kaiwaka - Emerging themes

Issues, challenges, insights and opportunities

1. SH1 severing the community and making it difficult to develop
2. Lack of appropriate zoning
3. Lack of defined centre / community heart
4. Safety of children, visitors and pedestrians (primarily due to SH1)

Visions and aspirations

1. Making Kaiwaka a creative destination - “The little town of delights”
2. Recognised as the key entry point and gateway to Kaipara and Northland
3. Developing an active, connected walkable community
4. Develop a river park, playground and town square
5. Increase opportunities for commercial, industry and manufacturing

6. Maungatūroto



July/August 2019

Engagement 1 - Issues, Vision and Principles

Kaipara Spatial Planning

Kaipara Spatial Planning Project - Dargaville | Kaiwaka | Maungaturoto

↑ Omapere 81 KM
↓ Maungaturoto 64 KM

DARGAVILLE



SAYLIS BEACH

Baylys Coast Rd

To Whangarei



Maungatūroto - Emerging themes

Issues, challenges, insights and opportunities

1. Topography, slope and instability restricting development opportunities
2. Lack of appropriate zoning
3. Lack of educational and career opportunities for youth

Visions and aspirations

1. A town that is a good place to live, work and play for multiple generations
2. A service town supporting surrounding communities
3. Keep Maungatūroto's unique identity and character
4. Increase population
5. Improve and enhance connection to railway and waterways
6. Increase opportunities for safe and connected walking and cycling

Paparoa



July/August 2019

Engagement 1 - Issues, Vision and Principles

Kaipara Spatial Planning

Kaipara Spatial Planning Project - Dargaville | Kaiwaka | Maungaturoto

↑ Omarepe 81 KM
↓ Maungaturoto 64 KM

SAYLIS BEACH

Baylys Coast Rd

DARGAVILLE



 KAIPARA DISTRICT

To Whangarei

Paparoa - Emerging themes

Issues, challenges, insights and opportunities

1. Flooding of road and main shops
2. Lack of visibility and directional signage to Paparoa
3. Lack of appropriate zoning
4. Lack of medical services

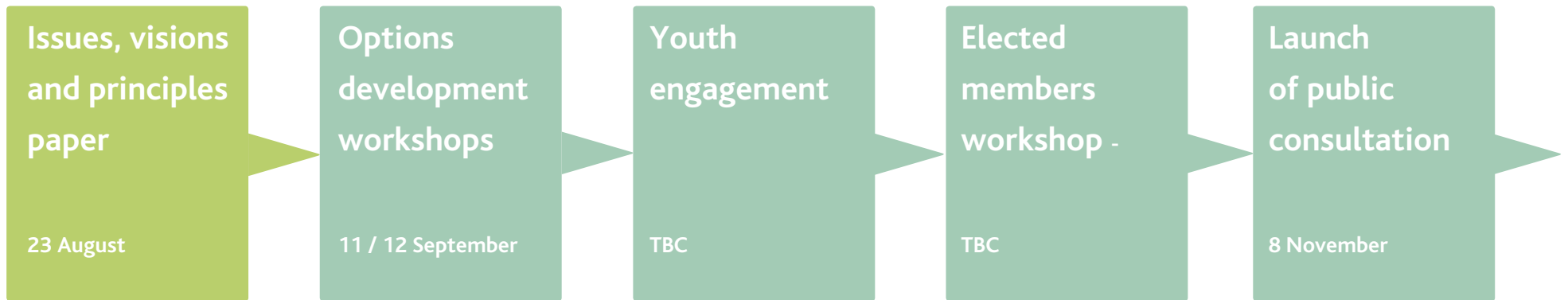
Visions and aspirations

1. Maintain and enhance village atmosphere and character including heritage
2. Build on existing creative community and facilities
3. Connecting communities through walking and cycling trails
4. Maintain and enhance connection to the river

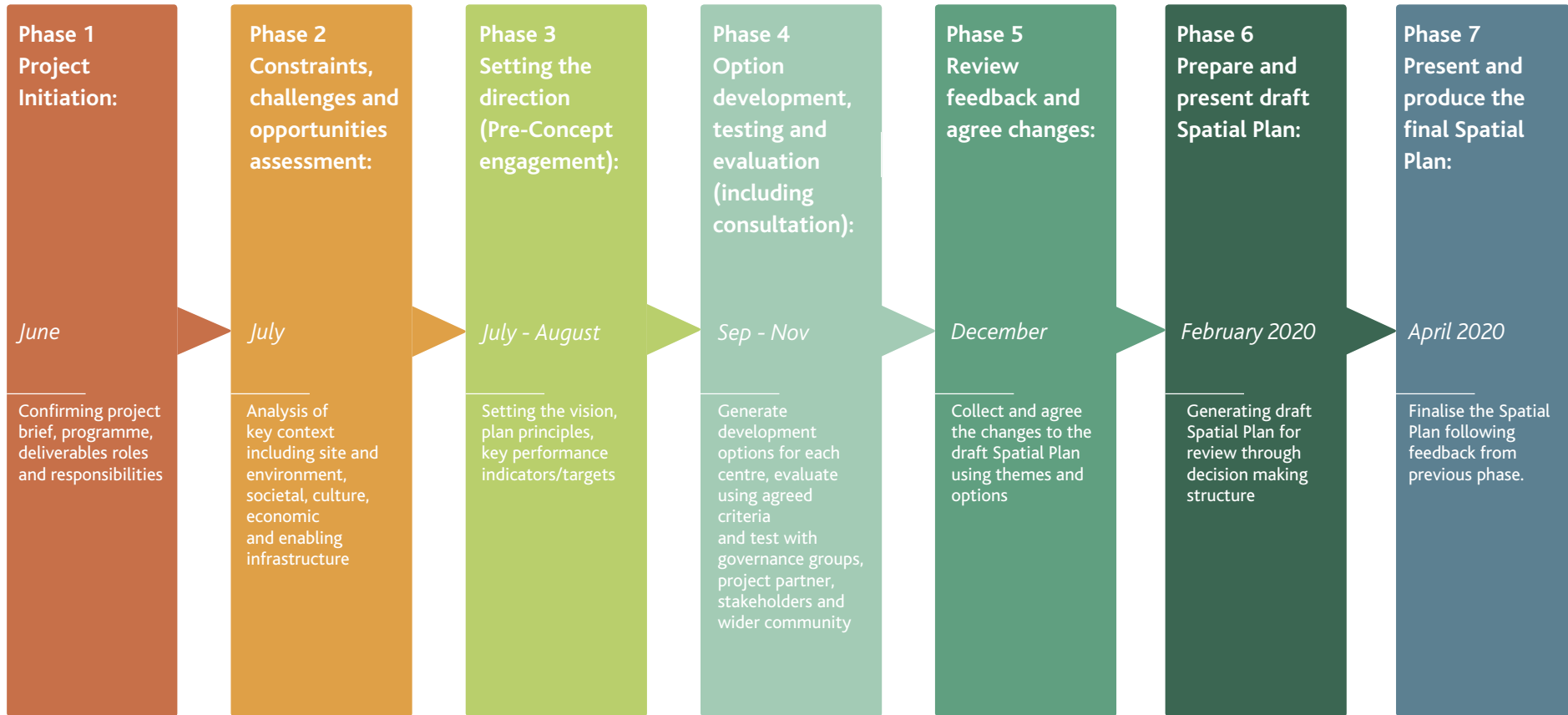
7. Questions + Answers



8. Next Steps



8. Next Steps



July/August 2019

Engagement 1 - Issues, Vision and Principles

Kaipara Spatial Planning

Kaipara Spatial Planning Project - Dargaville | Kaiwaka | Maungaturoto

↑ Omapere 81 KM
↓ Maungaturoto 64 KM

DARGAVILLE



BAYLYS BEACH

Baylys Coast Rd



To Whangarei